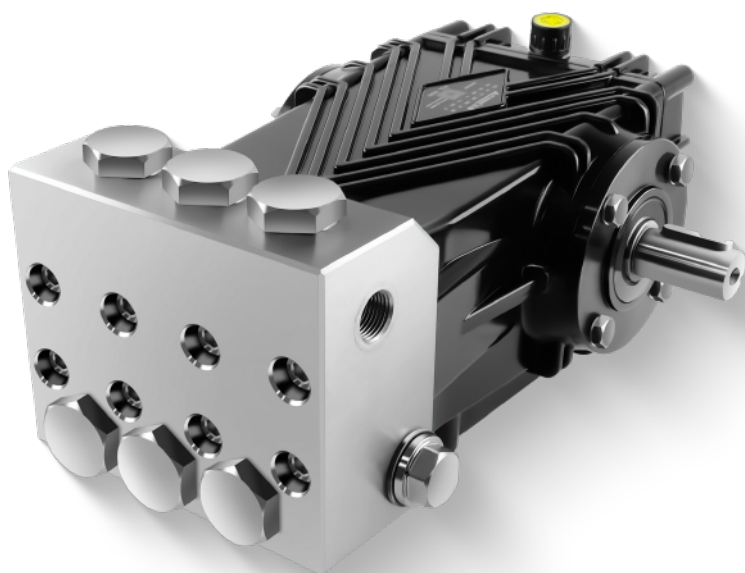


# FCL



实心轴 Ø 24mm

## 产品参数

型号	转速	流量		压力			功率		重量	进水口	出水口
	RPM	L/min	GPM	Bar	Mpa	PSI	kW	HP		kg	Thread
FCL 3030	1450	30.0	7.9	300	30	4350	18.0	24.1	16.8	G 3/4	G 1/2
FCL 4025	1450	40.0	10.5	250	25	3625	20.0	26.8	16.8	G 3/4	G 1/2
FCL 5020	1450	50.0	13.2	200	20	2900	20.0	26.8	16.8	G 3/4	G 1/2
FCL 6018	1450	60.0	15.9	180	18	2610	21.6	29.0	16.8	G 3/4	G 1/2
FCL 3630	1750	36.2	9.6	300	30	4350	21.7	29.1	16.8	G 3/4	G 1/2
FCL 4825	1750	48.0	12.7	250	25	3625	24.0	32.1	16.8	G 3/4	G 1/2
FCL 6020	1750	60.3	15.9	200	19	2755	24.0	32.1	16.8	G 3/4	G 1/2
FCL 7218	1750	72.4	19.1	180	18	2610	26.1	35.0	16.8	G 3/4	G 1/2

## 尺寸图 (mm)

